

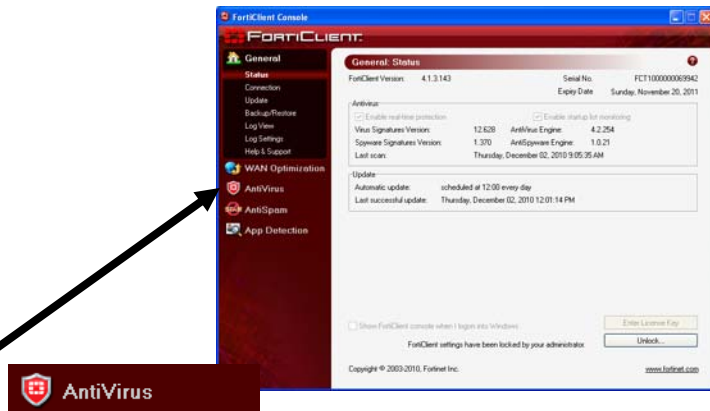
# Scanning Removable Media

1. Insert media - floppy disk, flash drive, CD, memory card

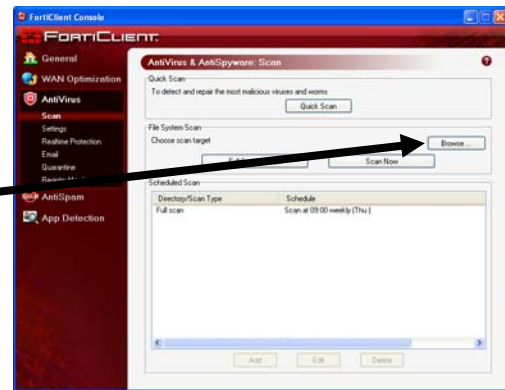
2. Open FortiClient. There should be a shortcut on your desktop.



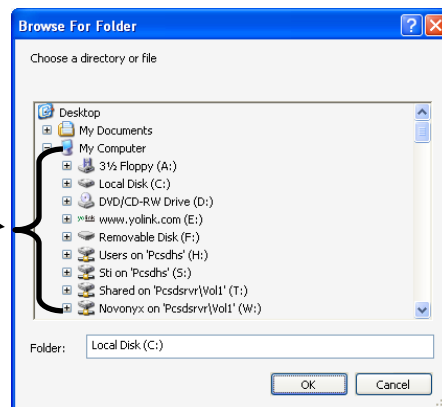
3. Click "AntiVirus" tab



4. In the box labeled "File System Scan" - Click Browse



5. Find the drive holding the media, Click once to select, then Click "OK"



6. Click "Scan Now"

